



Made in the USA
Of domestic and imported parts

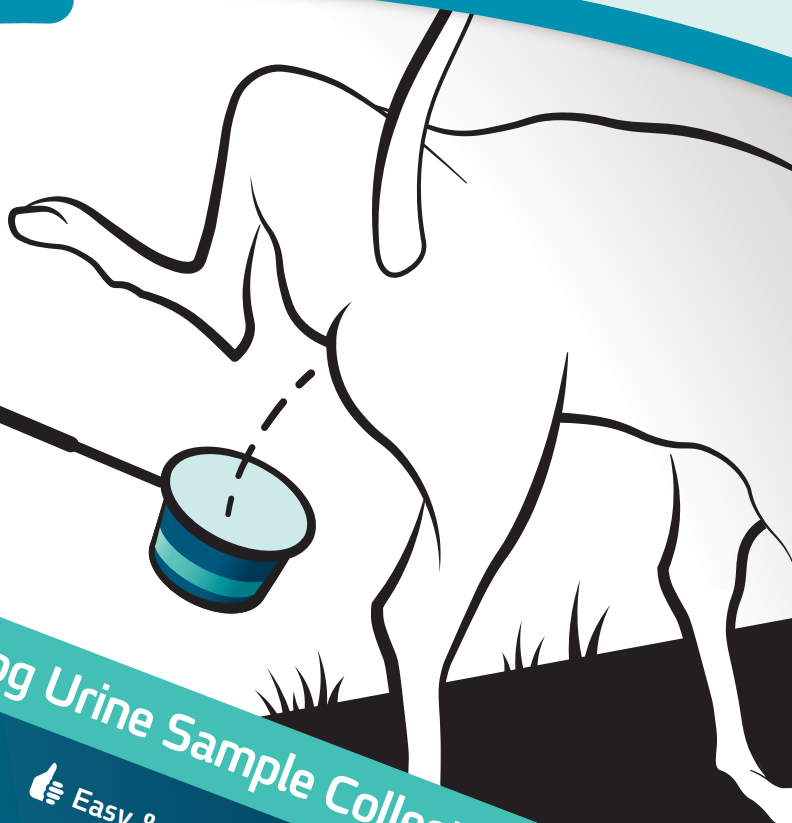


CheckUp

P-Pole

Dog Urine Sample Collection Made Easy

For all sizes and breeds!



Extendable Pole for Dog Urine Sample Collection

♻️ Reusable

🚫 Noninvasive

👍 Easy & Clean

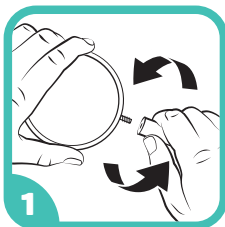
✂️ Fast assembly

Checking is caring. So CheckUp.



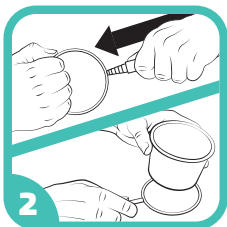
How to Use P-Pole

For monitoring a specific chronic condition, visit www.checkupkit.com to purchase our diagnostic testing strips.



Pole assembly

Attach the metal ring to the telescopic pole by rotating it.



Place the cup

Pull the metal ring to extend the pole and place the cup inside of it.



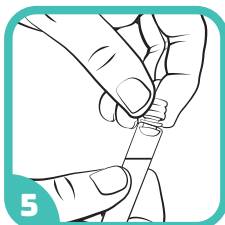
Collect sample

Catch a sample while dog is urinating.



Fill the vial

Fill the vial at least 3/4 way using the pipette.



Store the sample

Close the vial with the cap and keep in refrigerator for up to 48h.



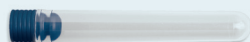
Further analysis

Take the sample to your vet for further testing.

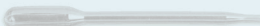
In the Box



- 1 x telescopic pole (11" / 23 cm.)
- 1 x detachable metal ring
- 3 x disposable cups



- 3 x sample collection vials



- 3 x sample collection pipettes



Manufactured by:
Coastline Global, Inc.
827 Lincoln Ave, Suite B11, West Chester, PA 19380
888-999-3050 (tel) 888-999-3758 (fax)
info@coastlineglobal.com

- For in vitro diagnostic use in animals only.
- Keep away from children.



www.checkupkit.com

